



CASE STUDY

Related Argent

4 Stable Street, London N1C 4AB

Related Argent makes a difference with Envelo

Property developer Related Argent has a stunning head office near Kings Cross. A mix of well-designed open areas, meetings rooms and desk banks provide a wonderful place to work, meet and collaborate.

Related Argent asked Envelo to look at opportunities to improve how they look after their people and communities, and provide greater transparency on health & wellbeing in the workplace.

Envelo commenced monitoring air, surfaces and occupancy in late August 2022, followed by targeted workflow from late November 2022. Workflow improved air quality in heavily used meeting rooms, automatically controlled air purification devices, improved surface hygiene and integrated with the existing occupancy monitoring system.

Related Argent has been able to demonstrate to employees and visitors that 4 Stable Street is a healthy environment, as well as clearly communicate the improvements made.

Work continues to unlock major energy-efficiency savings identified by Envelo through integration with the Building Management System (BMS).



Envelo has **eliminated all severe impacts** to health & wellbeing arising from air quality & surface hygiene.



Moderate impacts have been **reduced by 20-50%**.



Significant **energy-savings have been identified** and are being targeted through **BMS integration**.

“The team at Envelo surpassed my expectations with a service that has been well thought-through and can be deployed with ease. Envelo is helping us guarantee a healthy workspace, and be transparent to employees and visitors alike about our buildings. Envelo should be an essential part of building management going forwards.”

Al Beevers, Health & Safety Director, Related Argent

“Envelo’s workflow makes it easy for us to keep the environment healthy for our guests and employees.”

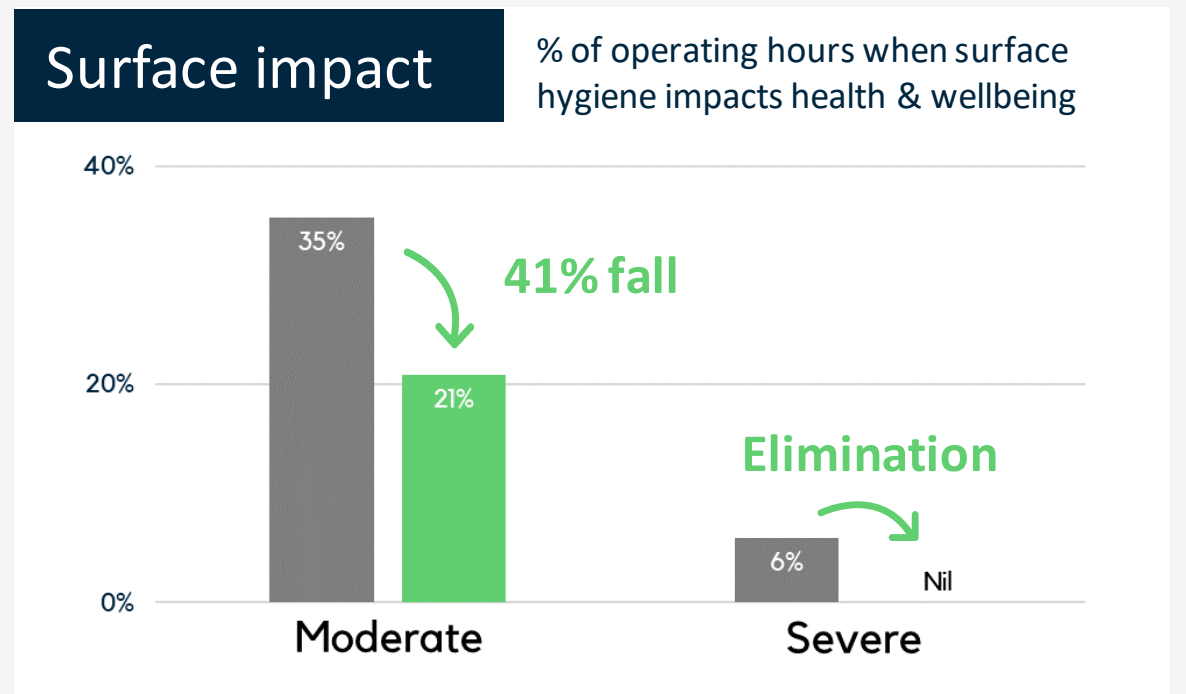
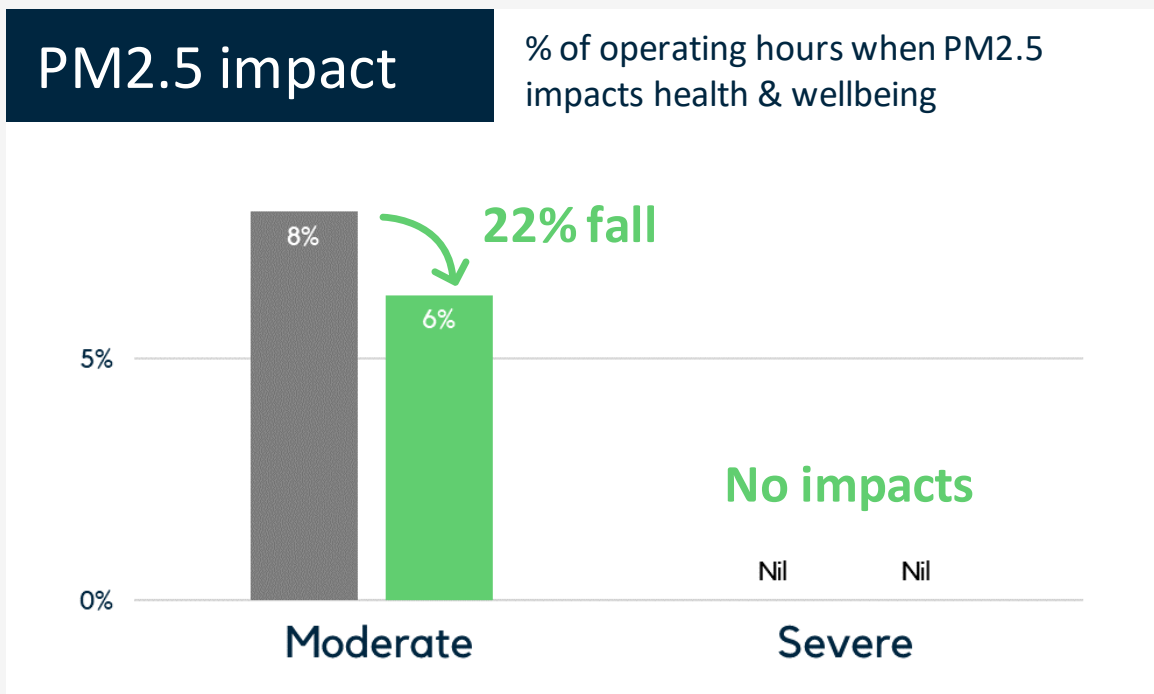
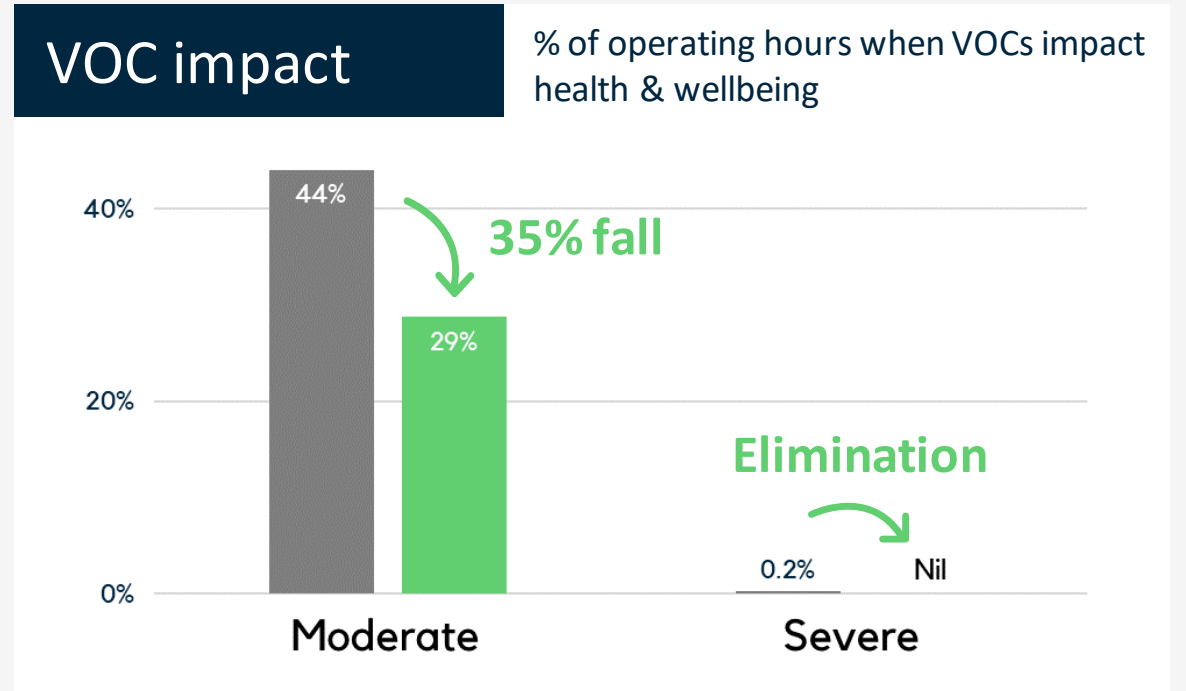
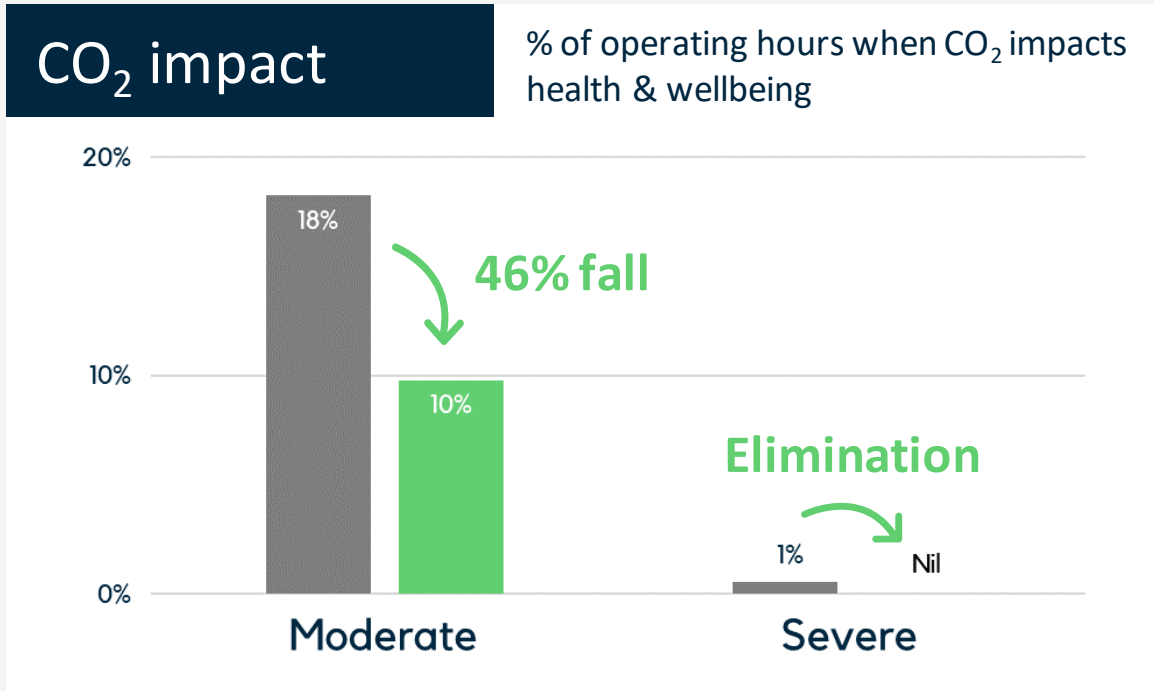
Neje Thezolin, Hospitality Manager, Related Argent

Impacts on health & wellbeing before and with EnVELO workflow

A study from 28 August 2022 to 26 January 2023 used continuous air quality measurements taken across 4 Stable Street taken every 5 minutes, together with regular surface testing. EnVELO workflow was deployed from 28 November 2022, with other spaces at 4 Stable Street remaining without workflow for control purposes. The charts show the time during operating hours when there is a moderate or severe impact to human health & wellbeing (based on thresholds for relevant parameters being breached), both before and with EnVELO's workflow being deployed.

Before
EnVELO

With
EnVELO



- ## Benefits delivered
- ✓ Improved air quality & surface hygiene, helping to reduce sickness & improve productivity
 - ✓ Use of existing occupancy data & combined with air & surfaces data into one platform
 - ✓ Reception display showing employees & visitors how office looks after health & wellbeing
 - ✓ Insights to help manage & improve air handling system/BMS
 - ✓ Improved cleanliness, look & feel of glass, metal, and frequently touched surfaces

